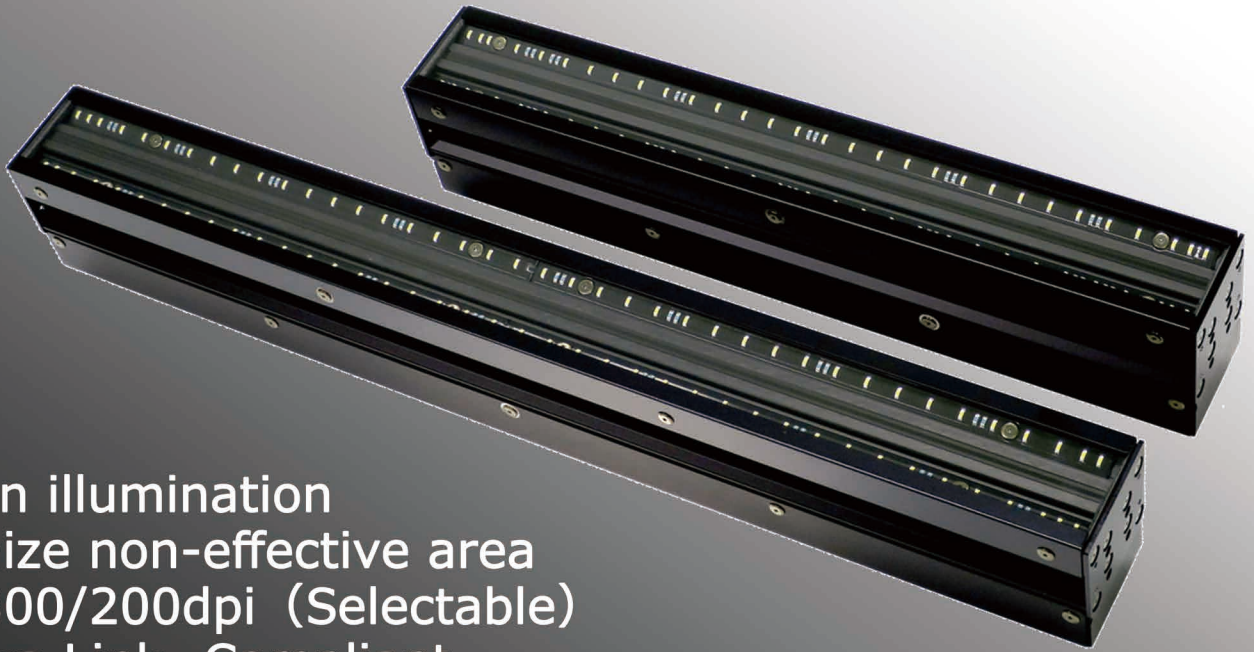


**Canon** CANON COMPONENTS, INC.

Industrial inspection Contact Image Sensor

# IDC series

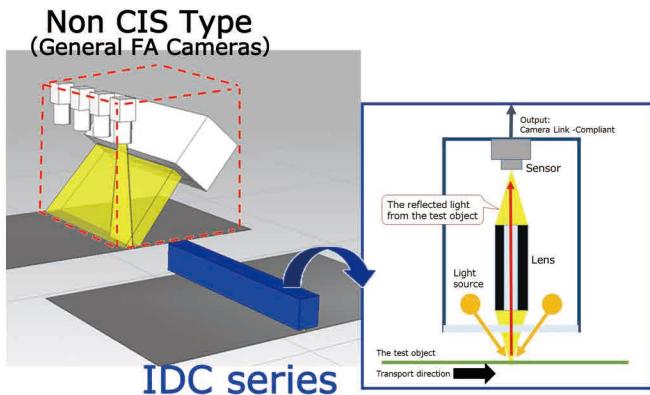
**All in One capture component  
for Machine vision**



- Built in illumination
- Minimize non-effective area
- 600/300/200dpi (Selectable)
- Camera Link -Compliant
- Scan mode (Color/monochrome)
- Equipped with non-saturation mode (TIS mode)
- Maximum transfer speed 36m/min. (600dpi/color)

## All in One

Built in optical and signal process is able to minimize the space compared with existing industrial camera



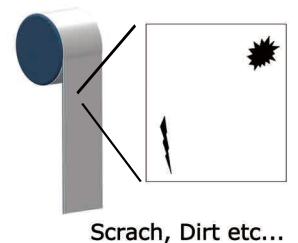
## Use example

- Print inspection
- Web inspection
- Other surface inspection

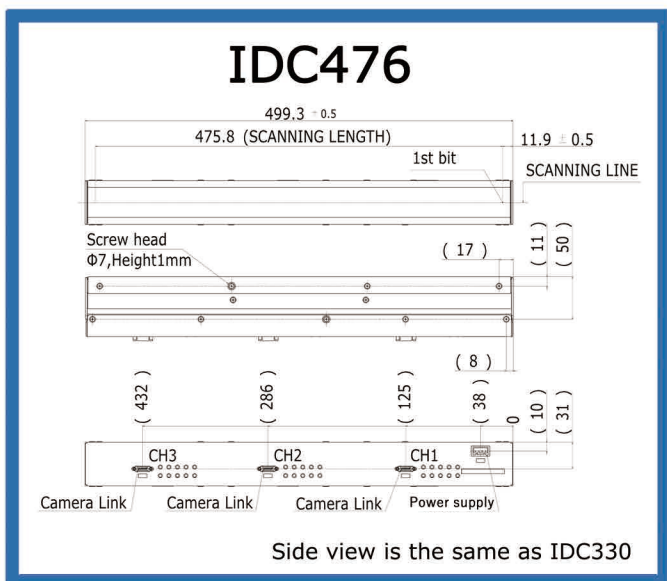
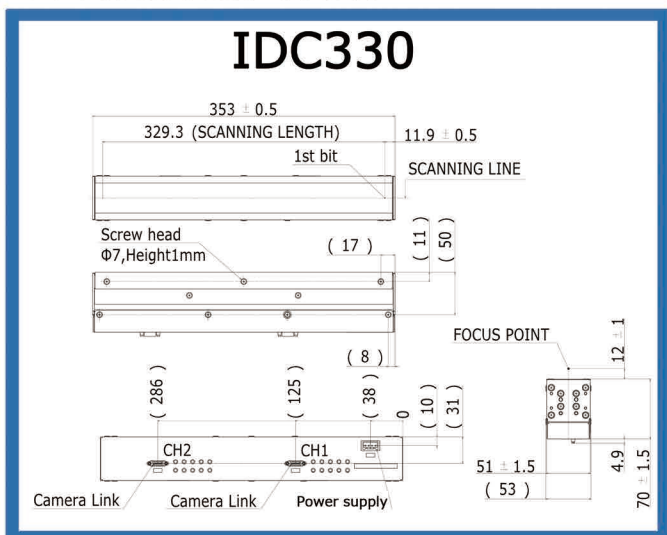
Ex. Label print inspection



Ex. Web inspection



## ● External view

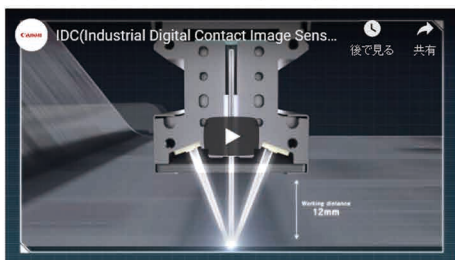


## ● Specifications

Item	IDC330	IDC476	Remarks
Scanning length	330mm	476mm	
Effective scanning length	330mm	476mm	
Effective pixel number	7,776 x 3 (RGB)	11,232 x 3 (RGB)	600dpi
Pixel number	7,776 x 3 (RGB)	11,232 x 3 (RGB)	
Scanning density	600/300/200dpi		
Pixel CLK frequency	20MHz		
Pixel data	RGB 8bit		
Scanning speed color/monochrome x 1	600dpi : 71μs/line(36mpm, 14kHz) 300dpi : 38μs/line(132mpm, 26kHz) 200dpi : 28μs/line(276mpm, 36kHz)		RGB color or Mono I
Scanning speed monochrome x 3	600dpi : 27μs/line(92mpm, 37kHz) 300dpi : 16μs/line(307mpm, 61kHz) 200dpi : 13μs/line(595mpm, 78kHz)		Mono II
Output(Digital)	Camera Link -Compliant Base x 2port	Camera Link -Compliant Base x 3port	
Output data CLK	60MHz		
Optical system	Rod Lens Array		
Luminous source	White LED		
Supply voltage	VCC : 5V±5%	VLED : 24V±5%	
Power consumption	VCC : 1.7A VLED : 0.7A	VCC : 2.4A VLED : 1.4A	VCC Current : Effective value LVCC Current : Effective value at LED ON Duty 100%
Outer dimension	W353 x H70 x D53mm	W499 x H70 x D53mm	
Weight	1.8kg	2.5kg	

## ● Introduction movie

<http://compo.canon/en/product/cis/>



IDC(Industrial Digital Contact Image Sensor) series

\*Specifications of the product might be changed to improve without a notice

Product Inquiry

©CANON COMPONENTS,INC. CIS Business Group homepage  
<http://compo.canon/en/product/cis/>



©CANON COMPONENTS,INC. CIS Business Group CIS Sales Div.  
Phone. +81-44-738-5650

**Canon** CANON COMPONENTS, INC.

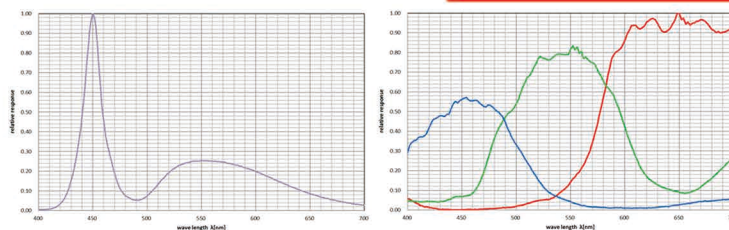
7-5-27, Kamikodanaka, Nakahara-ku, Kawasaki-shi, Kanagawa  
211-0053, Japan

\*Monochrome x 3 mode(Mono II) is not available with TIS mode

TIS mode : It works in case the external signal stops or slows down to avoid pixel saturation

\*Camera Link is a registered trademark of AIA

## ● Spectrum response Reference value



Illumination

Sensor IC

Date.2019.Oct